



interLINK

Introducing InterLink from Interis.

InterLink is an Enterprise Application Integration (EAI) and Web Content Platform that enables easy, high speed integration between local and remote Applications.

InterLink takes data from any publishing Application and forwards it to any number of subscribing Applications. Data received is converted into a format suitable for each receiving Application before being automatically uploaded.

A full Audit Trail and an Email Alerting framework mean that administrators are kept informed of any exceptions as they arise.

The high-performance InterLink Web Server is used to serve Application content directly to the Web. Built-in support for Web Services, Ajax, Open Edge and Fast-CGI (including PHP, Pearl, Ruby and Python) means that modern Web Technologies and Content Management Systems (CMS) can be used to serve great looking Web Sites using information embedded directly from your Applications.

InterLink's key features include:

A truly standards based, platform independent solution

The InterLink suite is supported on any Java SE™ 1.5, 1.6 or 1.7 compliant environment.

Fully automated, guaranteed delivery of data

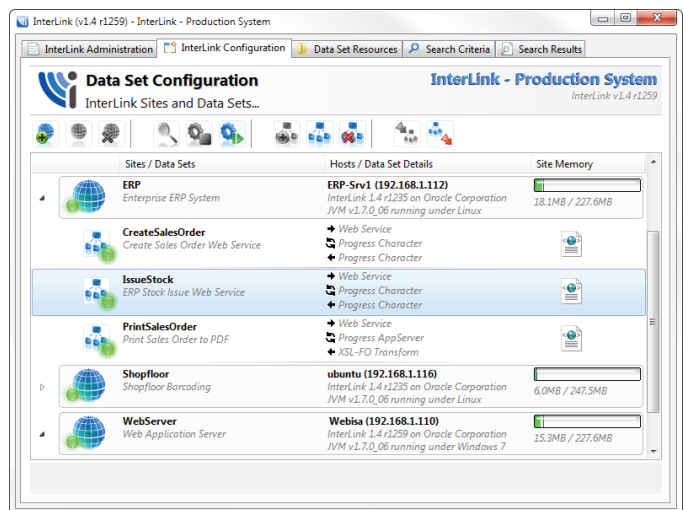
InterLink uses a reliable and secure Java Messaging (JMS) backbone, providing guaranteed delivery of data across the network - be that over a fast LAN, remote VPN or the open internet.

Data is automatically stored until it can be delivered – meaning that no information is lost due to an unreliable infrastructure.

Multiple JMS Vendors are supported including; Progress SonicMQ™, Sun MessageQueue™, Apache ActiveMQ™ and IBM WebsphereMQ™.

A fully Service Oriented (SOA) approach to integration

Each InterLink 'Data Set' represents a re-usable business service. Services can be linked to form complex Business Processes with error handling, conditional processing and user input steps.



Real-time event driven or comprehensive Data Set scheduling

InterLink supports both real-time request and scheduled polled processing to obtain data for loading into subscribing Applications. The InterLink Data Set scheduler caters for both simple interval based and more complex calendar based job scheduling requirements.

High Performance and Scalability

InterLink was designed with performance in mind.

A single Server instance is more than enough to integrate all but the most demanding of businesses, but Servers can be clustered and load-balanced for increased throughput and fault-tolerance if required.

Fully centralised development, deployment and management

The InterLink Manager allows for zero downtime configuration, deployment and runtime monitoring of the InterLink Network from one place.



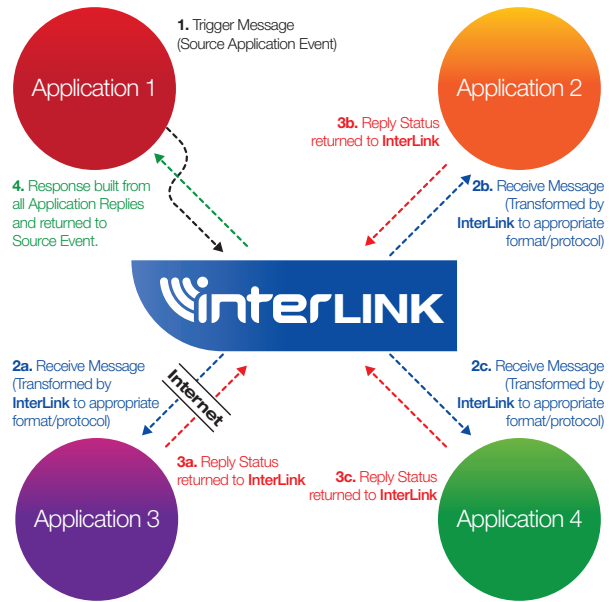
Telephone: **0845 544 0286** Fax: **0845 544 0386**
 Manor Farm House | London Road | Shardlow | Derby | Derbyshire | DE72 2GR
www.interis.net/interlink | info@interis.net

Very Flexible, Highly Configurable

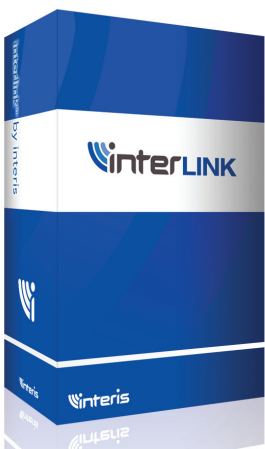
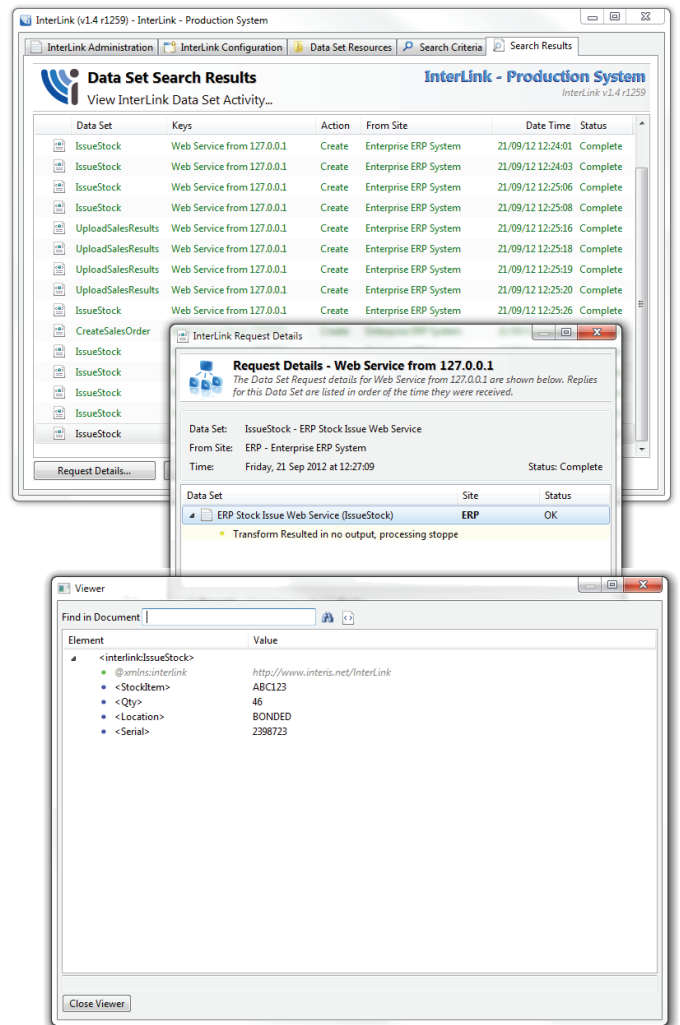
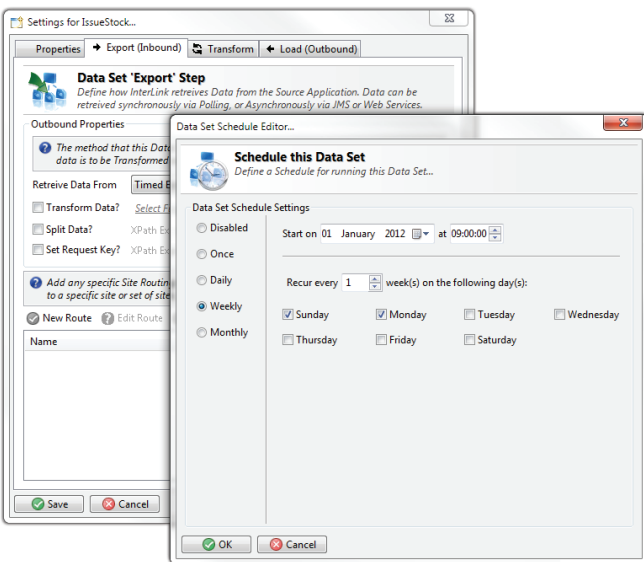
InterLink provides a number of standard Adapters for Application integration:

- Web Services (SOAP 1.1, SOAP 1.2 and RESTful)
- XML Transformation and Rule Processing (XPath, XQuery and XSLT)
- HTTP 1.1 – GET, POST, PUT and DELETE
- Email Messages and Attachments
- JMS Queues and Topics
- Run PHP, Pearl or Python Scripts
- Run programs on an OpenEdge App Server or through an OpenEdge Character session
- Update or query any JDBC compliant Database – e.g. Oracle, DB2, MS SQL Server, OpenEdge, PostgreSQL, MySQL etc.
- File Pickup – e.g. XML or CSV Data (using the Local File System or FTP)
- File Drop (using the Local File System or FTP)
- OPC (OLE for Process Control)
- InterLink Document Processing for creating Bitmaps, Postscript or PDF documents or PCL data for direct printing

Custom Adapters can also be developed and imported into the InterLink environment.



An example InterLink configuration.



Telephone: **0845 544 0286** Fax: **0845 544 0386**
 Manor Farm House | London Road | Shardlow | Derby | Derbyshire | DE72 2GR
www.interis.net/interlink | info@interis.net